



**The Crescent, Gloucester GL1 3LF**

**£127,500**



## The Crescent, Gloucester GL1 3LF

- No onward chain
- Spacious one double bedroom apartment
- Generous open plan living accommodation
- Allocated parking space & visitor parking permit
- Potential rental income of £595

**£127,500**

### Accommodation

Accessed to the side of the building via secure coded entrance, the apartment is located on the second floor of this historic Grade II listed building. Upon entering the apartment the spacious hallway benefits from a generous sized space currently utilised as a home office and opens to the light and airy open plan kitchen and living area benefitting from sash window to the front, breakfast bar and plumbing for an automatic washing machine..

To the other side of the entrance hall, the property is complete internally by the modern fitted shower room and the large double bedroom.

The apartment further benefits from allocated parking.

Viewing is highly advised for this beautiful apartment in a very popular area of Gloucester ideal for both residential buyers and investors alike with a potential rental income of £595 pcm.

### Location

Within the heart of the historic Gloucester,

those looking commute through bus routes and the train station, housing a direct line to London Paddington. With a range of local amenities along London Road to include a general store, pub, hairdressers and service station, whilst additional superstores can be located throughout the city alongside both primary and secondary schooling.

### Local Authority & Services

Gloucester City Council - Tax Band B.  
We understand all mains services are connected to the property with the exception of gas.

### Tenure

Tenure - Leasehold. 999 years from 1 January 2006. First Port Property Services. Service charge approximately £1,508 per annum to include building insurance and water rates. Ground Rent: £150 per annum.

\*Information correct as of 21/4/21\*



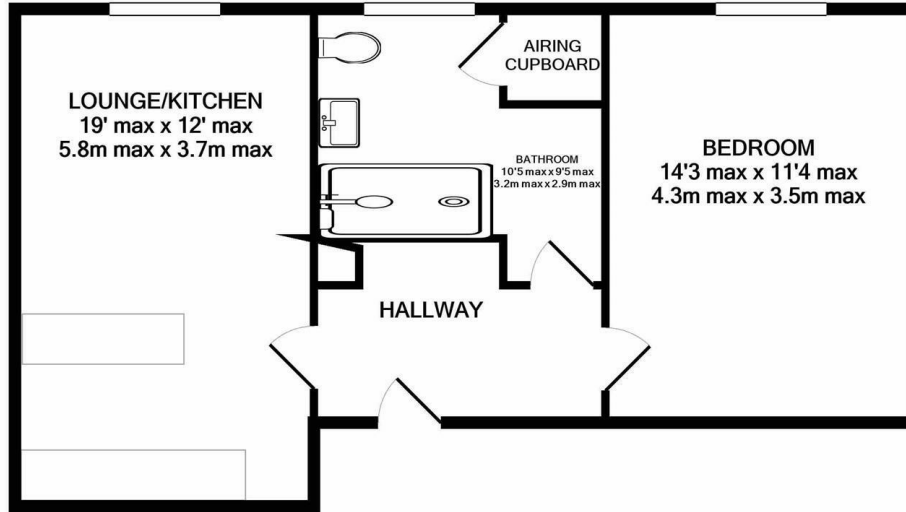
Unit C Barge Arm East, Gloucester Docks, GL1 2DQ

01452 398010

docks@naylorpowell.com

www.naylorpowell.com





**TOTAL APPROX. FLOOR AREA 609 SQ.FT. (56.6 SQ.M.)**

Whilst every attempt has been made to ensure the accuracy of the floor plan contained here, measurements of doors, windows, rooms and any other items are approximate and no responsibility is taken for any error, omission, or mis-statement. This plan is for illustrative purposes only and should be used as such by any prospective purchaser. The services, systems and appliances shown have not been tested and no guarantee as to their operability or efficiency can be given

Made with Metropix ©2020

Disclaimer: These particulars do not form part of any contract and no responsibility is accepted for any errors or omissions in any statement made, whether verbally or written for or on behalf of Naylor Powell.

Floorplans have been prepared for identification purposes only, they are not to scale and no guarantee can be given as to their accuracy.

Prospective purchasers please be aware none of the appliances, boiler, heaters etc. which may have been mentioned in these particulars have been tested and no guarantee can be given that they are in working order. Prospective purchasers should arrange for such items to be tested at their own expense.

